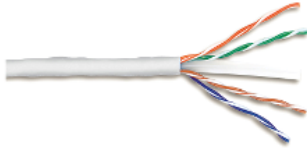


Product datasheet

Specifications



Category6, 4pr UTP Cable 305m White, LSZH



ACT4P6ULS3RBWE

Main

Range	Actassi
Product or component type	Copper cable
Colour tint	White
Cable shielding type	U/UTP

Complementary

Type of cable	4 pair cables
Communication network category	6

Minimum return loss	Guaranteed: 21.0 dB at 1 MHz Guaranteed: 24.0 dB at 4 MHz Guaranteed: 25.5 dB at 8 MHz Guaranteed: 26.0 dB at 10 MHz Guaranteed: 26.0 dB at 16 MHz Guaranteed: 26.0 dB at 20 MHz Guaranteed: 25.3 dB at 25 MHz Guaranteed: 24.6 dB at 31.25 MHz Guaranteed: 22.5 dB at 62.5 MHz Guaranteed: 21.1 dB at 100 MHz Guaranteed: 19.0 dB at 200 MHz Guaranteed: 18.3 dB at 250 MHz
---------------------	---

Attenuation	Guaranteed: 9.5 dB @ 25 kHz per 100 m cable Guaranteed: 10.7 dB @ 31.25 kHz per 100 m cable Guaranteed: 19.8 dB @ 100 kHz per 100 m cable Guaranteed: 32.8 dB @ 250 kHz per 100 m cable Guaranteed: 6 dB @ 10 kHz per 100 m cable Guaranteed: 15.4 dB @ 62.5 kHz per 100 m cable Guaranteed: 29 dB @ 200 kHz per 100 m cable Guaranteed: 8.5 dB @ 20 kHz per 100 m cable Guaranteed: 3.8 dB @ 4 kHz per 100 m cable Guaranteed: 5.3 dB @ 8 kHz per 100 m cable Guaranteed: 7.6 dB @ 16 kHz per 100 m cable Guaranteed: 2 dB @ 1 kHz per 100 m cable
-------------	--

Power sum near-end crosstalk [PSNEXT]	Guaranteed: 75.3 dB at 1 MHz Guaranteed: 66.3 dB at 4 MHz Guaranteed: 61.8 dB at 8 MHz Guaranteed: 60.3 dB at 10 MHz Guaranteed: 57.2 dB at 16 MHz Guaranteed: 55.8 dB at 20 MHz Guaranteed: 54.3 dB at 25 MHz Guaranteed: 52.9 dB at 31.25 MHz Guaranteed: 48.4 dB at 62.5 MHz Guaranteed: 45.3 dB at 100 MHz Guaranteed: 40.8 dB at 200 MHz Guaranteed: 39.3 dB at 250 MHz
---------------------------------------	---

Near end crosstalk [NEXT]	Guaranteed: 77.3 dB at 1 MHz Guaranteed: 68.3 dB at 4 MHz Guaranteed: 63.8 dB at 8 MHz Guaranteed: 62.3 dB at 10 MHz Guaranteed: 59.2 dB at 16 MHz
---------------------------	--

Disclaimer: This documentation is not intended as a substitute for and is not to be used for determining suitability or reliability of these products for specific user applications

Guaranteed: 57.8 dB at 20 MHz
 Guaranteed: 56.3 dB at 25 MHz
 Guaranteed: 54.9 dB at 31.25 MHz
 Guaranteed: 50.4 dB at 62.5 MHz
 Guaranteed: 47.3 dB at 100 MHz
 Guaranteed: 42.8 dB at 200 MHz
 Guaranteed: 41.3 dB at 250 MHz

Input impedance	100 Ohm (+/- 6) at 1...100 MHz
Maximum loop resistance	73.2 Ohm
Capacitance unbalance	330 pF / 100 m
Maximum resistance unbalance	5 %
Wire insulation material	PE
Conductor material	Solid bare copper
AWG gauge	AWG 23
Cable outer diameter	6 mm
Cable length	305 m

Environment

Ambient air temperature for operation	75 °C
Product certifications	IEC
Flame retardance	LSZH
Standards	ANSI/TIA/EIA-568-B ISO/IEC 11801 UL 444

Packing Units

Unit Type of Package 1	PCE
Number of Units in Package 1	1
Package 1 Weight	14.5 kg
Package 1 Height	35 cm
Package 1 width	27 cm
Package 1 Length	33 cm

Offer Sustainability

Sustainable offer status	Green Premium product
REACH Regulation	REACH Declaration
REACH free of SVHC	Yes
EU RoHS Directive	Pro-active compliance (Product out of EU RoHS legal scope) EU RoHS Declaration
Toxic heavy metal free	Yes
Mercury free	Yes
RoHS exemption information	Yes
China RoHS Regulation	China RoHS declaration Pro-active China RoHS declaration (out of China RoHS legal scope)
Environmental Disclosure	Product Environmental Profile

Contractual warranty

Warranty	18 months
-----------------	-----------